

Close encounters of the monoamine kind: immune cells betray their nervous disposition

Elizabeth J. Meredith,¹ Anita Chamba,¹ Michelle J. Holder,¹ Nicholas M. Barnes² and John Gordon¹

¹MRC Centre for Immune Regulation and

²Division of Neuroscience, The Medical School, University of Vincent Drive, Birmingham, United Kingdom

doi:10.1111/j.1365-2567.2005.02166.x

Received 4 February 2005; accepted 24 February 2005.

Correspondence: Dr John Gordon, MRC Centre for Immune Regulation, Division of Immunity & Infection, Institute of Biomedical Research, The Medical School, Vincent Drive, Birmingham B15 2TT, United Kingdom. Email: j.gordon@bham.ac.uk
Senior author: Dr John Gordon

Summary

Here we review the evidence for immune cells expressing multiple components of the serotonergic and dopaminergic systems that are more commonly associated with the central nervous system (CNS). We discuss where and how peripheral encounters with these biogenic monoamines occur and posit reasons as to why the immune system would wish to deploy these pathways. A full taxonomy of serotonergic and dopaminergic constituents and their workings in component cells of the immune system should facilitate the formulation of novel therapeutic approaches in diseases characterized by immune dysfunction and potentially provide a range of surrogate peripheral markers for registering and monitoring disturbances within the CNS.

Keywords: central nervous system; dopamine; lymphocytes; serotonin; transporters

Immune encounters with serotonin

Location

Serotonin (5-hydroxytryptamine/5-HT), though conventionally considered a neurotransmitter, is produced primarily by the enterochromaffin cells of the gut.¹ A recent study in rhesus macaques revealed that both CD3⁺ (T cells) and CD20⁺ (B cells) lymphocytes sit proximal to 5-HT-containing enteroendocrine cells.² The 5-HT released at these sites on mechanical (or psychological/emotional) stress is taken up via an active transport mechanism into a number of cell types with platelets providing an especially rich reservoir of serotonin in the circulation. Subsequent release of platelet-stored 5-HT can be rapid, triggered for example by platelet-activating factor, thrombin, complement component fragments C3a and C5a, and immunoglobulin E-containing immune complexes. At sites of inflammation and platelet activation, local concentrations of 5-HT could greatly exceed the relatively low amounts found free in serum. Both primary and secondary lymphoid organs are innervated with nerve fibres,³ as is skin,⁴ while even under non-pathological conditions both CD20⁺ B cells and activated T-cell 'blasts' can apparently cross the blood-brain barrier.⁵ Thus both in the periphery and the central nervous

system (CNS) immune cells have the potential to be exposed directly to 5-HT flow (summarized schematically in Fig. 1). Though much play is made of mast cells as an important source of 5-HT in rodents, serotonin is normally absent from human mast cells, being found only when they are associated with discrete pathologies such as in the stroma of carcinoid tumours and in mastocytosis.

Receptors

There are numerous reports of 5-HT modulating immune cell function. Of the 14 currently known receptor subtypes for 5-HT (see Table 1 for nomenclature and molecular characteristics), transcripts for eight have been found in rat immune tissues.⁶ Particularly for the promotion of T-cell proliferation, a major target for serotonin action appears to be the 5-HT_{1A} receptor, a property conserved between mammals and fish. B lymphocytes also carry this receptor subtype (among others) and, as with T cells, display NF- κ B-dependent up-regulation of both transcripts and protein for the 5-HT_{1A} receptor. At least for rodent splenic B cells, this receptor subtype seems to be involved in the 5-HT-promoted augmentation of mitogenic responses to both lipopolysaccharide and dextran sulphate (reviewed in ref. 6). Interestingly, serotonin, as well as the selective 5-HT_{1A} receptor agonist R-DPAT,

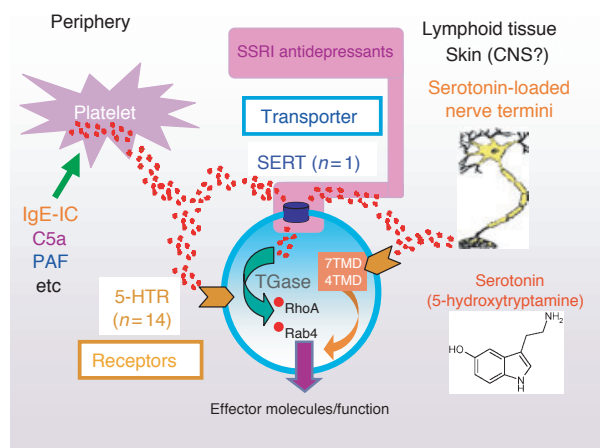


Figure 1. 5-HT stored in platelets or loaded into nerve fibres/cells within the circulation, skin, primary/secondary lymphoid tissues and even possibly the CNS is released on appropriate immune/inflammatory (stress/emotional?) activation. Immune cells exposed to 5-HT flow respond via receptors (up to 14 potentially, majority of which are 7-transmembrane domain (TMD) G-coupled proteins; 5-HT₃ is a 4TMD cation ion channel) and/or the serotonin transporter, serotonin transporter (SERT; also a target for the SSRI antidepressants that block 5-HT uptake). Novel SERT-mediated signalling pathway recently described by Walther and colleagues in platelets (15) may also operate in immune cells where direct SERT-driven function has been shown (11, 13): transported 5-HT via transglutaminase (TGase) used to 'serotonylate' small GTPases such as RhoA and Rab4, both of which impact lymphocyte (and other immune cell) effector function.

were shown recently to increase cell survival and S-phase transition in mouse splenocytes stimulated by T- or B-cell mitogens: these processes being accompanied by translocation of NF- κ B to the nucleus.⁷ These observations in *toto* point to a potential 5-HT_{1A} receptor/NF- κ B-dependent amplification loop in lymphocyte responses to serotonin. Extracellular signal regulated kinase (ERK) phosphorylation is another downstream signalling consequence of ligating 5-HT_{1A} receptors in peripheral blood mononuclear cells.⁸ In addition to its activity on lymphocytes, the 5-HT_{1A} receptor has been implicated in up-regulating phagocytic function in mouse peritoneal macrophages.⁹

A recent detailed study highlighted the expression of 5-HT receptors, the signalling pathway they engage, and the biological activity of 5-HT on human dendritic cells (DC). Immature DC preferentially expressed transcripts for the 5-HT_{1B}, 5-HT_{1E} and 5-HT_{2B} receptors, while mature DC mostly expressed 5-HT₄ and 5-HT₇ receptors. The use of isotype-selective receptor agonists showed that 5-HT stimulated 5-HT₃-dependent Ca²⁺ influx in both immature and mature DC whereas 5-HT₁ and 5-HT₂ receptor stimulation induced intracellular Ca²⁺ in immature DC only. Activation of 5-HT₄ and 5-HT₇ induced cAMP elevation in mature DC while enhancing the

release of interleukin-1b (IL-1b) and IL-8 and reducing the secretion of IL-12 and tumour necrosis factor- α .¹⁰

Transporter

Cell lines generated from B lymphocytes transformed with Epstein-Barr virus have provided a rich and productive resource for genotyping polymorphisms in the promoter region and intron 2 of the serotonin transporter (*sert*). Yet a functional role for lymphoid SERT has, until recently, been essentially ignored. We recently reviewed in detail the evidence for lymphocytes expressing functional SERT.¹ This was prompted by our finding of SERT protein and active 5-HT uptake in the constituent cells of Burkitt's lymphoma, a highly aggressive tumour characterized by an extraordinarily high mitotic index and phenotypically resembling B cells found in the germinal centres of secondary lymphoid tissues. The consequence of 5-HT entering these cells was the promotion of apoptosis, a process reversible by transporter blockers [such as the selective serotonin reuptake inhibitor (SSRI) fluoxetine] but not 5-HT receptor antagonists.¹¹ Interestingly, at higher concentrations, the SSRI are themselves pro-apoptotic for the lymphoma cells, offering the potential for a deliverable therapy in Burkitt's lymphoma.¹² We have since found appreciable levels of SERT protein in a diverse range of B-cell malignancies representing stages of differentiation arrest from pre-B (B-cell precursor acute lymphoblastic leukaemia) through to plasma cells (multiple myeloma). Though 5-HT could affect a number of the malignancies (as registered by cell-cycle arrest), an apoptotic outcome appeared to be specific to Burkitt's lymphoma cells, reflecting their ready propensity to enter this pathway as a result of negligible expression of the Bcl-2 survival protein.¹³ SERT may additionally offer a target to amphetamine analogues, such as methylenedioxymethamphetamine (MDMA), in these cells. The impact of MDMA – also known by its street name, 'Ecstasy' – on immune function was recently reviewed by Connor.¹⁴

Normal B cells also express SERT though in their basal state its levels are low. On stimulation, however, they rapidly acquire readily detectable SERT protein with characteristics similar, if not identical, to the 5-HT transporter found in brain. We are currently undertaking a full molecular comparison of lymphoid and neuronal SERT.¹³

Why should lymphocytes express the uptake machinery for 5-HT? One possible answer could find analogy to the mechanisms and consequences of 5-HT transport in the brain. Thus at local inflammatory sites of high 5-HT production, activated lymphocytes expressing functional SERT could serve to limit/regulate the amount of bioactive indoleamine available for external receptor-triggering; at the same time, any sequestered 5-HT protected from cellular monoaminoxidases (which are undoubtedly present in lymphocytes) could be stored for later release on

Table 1. Molecular, functional and pharmacological information on the human proteins that recognize 5-HT

	5-HT _{1A}	5-HT _{1B}	5-HT _{1D}	5-HT _{1E}	5-HT _{1F}
Structure	7TMD	7TMD	7TMD	7TMD	7TMD
Transduction	G _{i/o}	G _{i/o}	G _{i/o}	G _{i/o}	G _{i/o}
Selective agonist	8-OHDPAT	none	none	none	LY334370
Selective antagonist	WAY100635	SB236057	BRL15572	none	none
	5-HT _{2A}	5-HT _{2B}	5-HT _{2C}	5-HT ₃	5-HT ₄
Structure	7TMD	7TMD	7TMD	4TMD ¹	7TMD
Transduction	G _{q/11}	G _{q/11}	G _{q/11}	Integral cation channel	G _S
Selective agonist	none	none	none	none	BIMU8
Selective antagonist	MDL100907	none	SB242084	Ondansetron	SB204070
	5-HT _{5A}	5-HT _{5B}	5-HT ₆	5-HT ₇	5-HTT
Structure	7TMD	7TMD ²	7TMD	7TMD	12TMD
Transduction	unknown	unknown	G _S	G _S	Transport
Selective agonist	none	none	none	none	5-HT ³
Selective antagonist	none	none	SB271046	SB656104	Paroxetine ⁴

In accordance with IUPHAR recommendations, receptors in lower case appellation are classified as gene products because of the absence of a defined response in native tissue.

¹The 5-HT₃ receptor is comprised of five proteins which form a ligand-gated cation channel. To date, five different 5-HT₃ receptor subunits have been identified (5-HT_{3A}, 5-HT_{3B}, 5-HT_{3C}, 5-HT_{3D} and 5-HT_{3E}) although only the 5-HT_{3A} and 5-HT_{3B} have been studied in detail. To date, no pharmacological tools are able to discriminate between the 5-HT binding sites of the expressed isoforms (presence of the 5-HT_{3A} subunit appears essential to form a functional receptor).

²Expression of the 5-HT_{5B} gene in humans is doubtful because of the presence of a stop codon in the gene sequence which would result in a heavily truncated, presumably non-functional, protein. A number of additional 'orphan' 5-HT receptors (e.g. 5-HT_{1P}) have also been described although no corresponding gene sequences have been identified. TMD, transmembrane domain.

³5-HT is the transported substrate of the 5-HTT.

⁴Paroxetine blocks the transporter.

appropriate stimulation at a site distal to the initial exposure. In addition, evidence has been presented for SERT acting not merely as a transport protein but as a signal transducer in its own right when contacting substrate. Moreover, SERT-delivered 5-HT was recently shown to affect signal transduction directly by a novel modification, the so-called 'serotonylation' of small GTPases (see Fig. 1).¹⁵ Thus, SERT appears to be potentially equipped to modify a lymphocyte's functional behaviour in a number of distinct ways. The precise unravelling of these is likely to be an area of intense research, providing fascinating insights into the way serotonin affects immune responses. Moreover, SERT is not restricted to lymphoid cells within the immune system: macrophages for example express both transcripts and protein with the appropriate pharmacology for the transporter.¹⁶

Immune encounters with dopamine

Location

As for serotonin, there is evidence that the innervation of lymphoid tissues can be dopaminergic in nature,

particularly during psychological stress, thus providing a source of this catecholamine for immune cells in an appropriate locale when released on sympathetic activation.¹⁷ However, in addition to this potential paracrine flow is the recognition that immune cells themselves have a capacity for dopamine production whereupon the dopamine could be utilized either in paracrine or autocrine mode. Catecholamines are present in lymphocytes, macrophages and neutrophils and at least in the case of the first two, dopamine is actively synthesized in the cells from tyrosine via the intermediary L-dopa (reviewed in ref. 1).

Receptors

A comprehensive description of dopamine receptor expression in the immune system was undertaken by McKenna and colleagues who used flow cytometry and subtype-specific antibodies to study the distribution among peripheral blood leucocytes.¹⁸ Of the D₁-like receptor family only D₅ was detected, and of the D₂-like receptor family all three receptor subtypes were found. T lymphocytes and monocytes had low expression of

Table 2. Immunomodulatory effects of dopamine

Concentration	Organism/Cell type	Effect	Proposed mechanism	Ref.
Immunosuppressive				
Dop 250 pm	Human T cells (CD4 ⁺ /CD8 ⁺) activated with IL-2/anti-CD3	50% decrease in thymidine uptake	Activity at D ₁ -like receptors. Effects reversed by D ₁ -like receptor antagonist SCH23390	24
Dop 10 nm	Human B and T cells	Apoptosis	Bcl-2/Bax and Fas/FasL alterations	25
Dop 30 nm	Human T cells activated with anti-CD3	fl thymidine uptake; fl cytokine release	D2 and D3 receptors (reversed by receptor antagonism)	26
Dop 100 nm–100 1M	Murine splenic B cells stimulated with anti-I	Inhibition of proliferation (EC ₅₀ 10 1m)		27
Dop 10 1m–100 1m	Murine splenic lymphocytes stimulated with Con A/LPS	Dose-dependent inhibition of thymidine uptake		28
Continuous Dop infusion	Murine splenic T cells (in vivo)	fl numbers of IFN- γ -producing cells	D ₂ receptor. Effects reversed by D ₂ R antagonist	29
Dop/Dop agonist 500 nm) 1 mm	Human peripheral lymphocytes	Apoptosis	α -adrenergic receptor engagement at least partially responsible for effect	30
6-OHDA 50–250 1m	Human (male) peripheral blood cells	Apoptosis	Oxidative stress (H ₂ O ₂ production). Reversed by antioxidants	31
Dop > 100 1m	Macrophage cell line RAW264.7	fl proliferation, > apoptosis	Oxidative stress. Effects reversed by ascorbic acid	32
Dop 1 mm	Murine thymocytes	Apoptosis	Oxidative stress. Effects reversed by dithiothreitol	33
1-DOPA 1–100 1m	Human lymphocytes or murine splenocytes stimulated with LPS/ConA	fl thymidine uptake	Oxidative stress	34
Dop or 1-DOPA 10 or 100 1m	Human PBMC stimulated with T-cell (ConA) or B-cell (pokeweed) mitogens	fl thymidine uptake fl IFN- γ release fl number of IgG/IgM-secreting cells		35
Dop 10 1m	Murine splenic and thymic cells stimulated with T-cell (ConA) or B-cell (LPS) mitogens	fl thymidine uptake, EC ₅₀ 10 1m	Could not be reversed with D ₂ -like receptor antagonist	36
Dop 100 1m) 1 mm	EBV-transformed B-lymphocytes	Impaired mitochondrial function	Suggested to be result of oxidative stress	37
Dopamine (in response to physical stress)	Mouse (in vivo)	Impaired Th1/Th2 cytokines and impaired NK response	D ₂ receptors (effects reversed with D ₂ -like receptor antagonists)	38
Immunostimulatory				
Dop < 1 1m	Human T cells	Activation	Signalling via D ₂ and D ₃ receptors	39
Dop or 1-DOPA infusions	Murine splenic T cells (in vivo)	Enhanced response of ConA/anti-CD3 stimulated splenocytes	Signalling through D ₂ receptors. Effects reversed by D ₂ receptor antagonist	29
Dop/Dop-R agonists	Murine splenocytes with ConA or LPS – in vivo and in vitro	Enhanced proliferation	Receptor-mediated	40
Dop levels fl by lesions to dop. neurons	Mouse	Impaired proliferation of splenic lymphocytes; depressed NK activity	Inferred that dopaminergic pathways necessary for immune function	41
Dop receptor agonists	Mouse model (in vivo)	Enhanced immune responses		42
100 nm D2/D3 agonist	Human CD4 ⁺ or CD8 ⁺ T-cells	CD4 ⁺ cells shift to TH ₁ . CD8 ⁺ cells triggered to produce IFN- γ	Signalling through D ₃ receptor (effects reversed by D ₃ antagonist U-maleate)	20

Dop, dopamine; ConA, concanavalin A; IFN- γ , interferon- γ ; LPS, lipopolysaccharide; NK, natural killer; PBMC, peripheral blood mononuclear cells; Th1, T helper type 1.

dopamine receptors, whereas neutrophils and eosinophils had moderate expression. B cells and natural killer cells showed higher and more consistent expression. Dopamine receptors D₃ and D₅ were found in most individuals whereas expression of D₂ and D₄ appeared more variable. Dopamine, via a receptor-dependent mechanism, also appears to modify directly the activity of regulatory T cells (T_{reg}).¹⁹ The catecholamine was shown to reduce both the suppressive and trafficking activities of T_{reg} through type 1 receptors (D₁ and D₅) which were abundantly expressed by these regulatory cells. Evidence was presented for dopamine having a negative impact on D₁-like receptor-dependent ERK1/2 phosphorylation in the T_{reg} population.

An intriguing study, recently reported by Ilani and co-workers, indicates the involvement of D₃ receptors in a novel paradigm: the neurotransmitter-mediated brain regulation of peripheral T lymphocytes.²⁰ Their study appeared to be spurred, at least in part, by the conflictingly low concentrations of dopamine found in the periphery compared to the relatively high amounts seemingly needed to exert discernible effects on immune cells. They resolved this paradox by demonstrating that: (1) only in-vitro-activated human T-cell 'blasts' and not resting T lymphocytes respond to D₃ receptor stimulation; (2) peripheral T cells from rats injected with 1-DOPA/carbidopa demonstrated properties identical to those of human T-blasts exposed to dopamine; (3) perturbations seen in the model systems were recaptured by peripheral T cells from patients with schizophrenia, postulating here that activated T blasts will have been exposed to increased brain levels of dopamine associated with the disease. The authors propose a 'brain-to-T cells' pathway whereby activated T-blasts that are known to cross the 'blood-brain barrier' are exposed and respond to dopaminergic flow before re-entering the circulation and transmitting knowledge/information of the encounter – via, for example, cytokine release – to peripheral T (and perhaps other immune) cells excluded from the CNS.

Transporter

We recently reviewed the published evidence for lymphocytes expressing a functioning uptake system for dopamine.¹ As for SERT, lymphocytes offer a readily accessible resource for genotyping polymorphisms in the dopamine transporter (DAT). Correspondingly, Mill and colleagues demonstrated and quantified DAT transcripts in cerebellum, temporal lobe and lymphocytes using quantitative real-time reverse transcription-polymerase chain reaction when investigating the impact on expression of individual variations in the 10-repeat allele of a variable number tandem repeat (VNTR) in the 3'-untranslated region of the transporter.²¹ Though also shown to contain immuno-reactive DAT protein, no specific function for the

transporter in lymphocytes has so far been proffered. Nevertheless, the same arguments offered above as to the teleology of SERT's presence in immune cells could be applied equally to DAT and an exploration of these postulates should prove a fertile area of future research activity.

Overview/synthesis of dopamine's encounters with immune cells

We have attempted in Table 2 to summarize the literature that is available regarding dopamine's impact on immune cells and/or the functioning of an immune response. It is evident that the bulk of reported effects are inhibitory rather than stimulatory. We wish to suggest that this

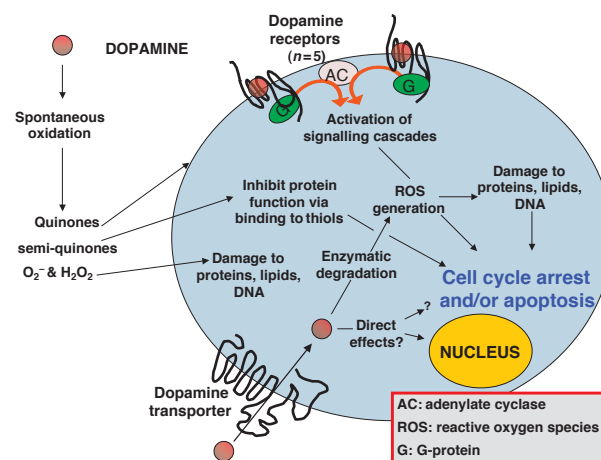


Figure 2. Specific – receptor-mediated: Binding of the monoamine to dopamine receptors alters cAMP levels through modulation of adenylyl cyclase (AC) – an enzyme to which these receptors couple (via stimulatory or inhibitory G-proteins). Activation of D₁-like and D₂-like receptors may inhibit T-lymphocyte activity (26) possibly via increases in cAMP levels (24). Co-activation of D₁ and D₂ dopamine receptors may initiate a unique signalling pathway, not activated by either D₁ or D₂ receptors alone (43). Alternatively, receptor ligation may initiate a signalling pathway that leads to oxidative stress (44). Specific – transporter-mediated: Dopamine can be actively internalised by cells that express the dopamine transporter (DAT). Intracellular dopamine may bind directly to cellular components such as GTPases to alter their activity (15) or enter the nucleus (45) and bind to nuclear elements (46) to alter transcriptional activity. Cellular dopamine can also chelate iron leading to cell cycle arrest (47). Inside the cell, dopamine can be metabolised by enzymes with the generation of reactive oxygen species (ROS) which may damage cellular components leading to cell-cycle arrest or death. Non-specific mechanisms: Extra-cellular dopamine can undergo auto-oxidation to generate quinones, semi-quinones and hydrogen peroxide (48). Quinones/semi-quinones may bind to thiol groups on cell-surface proteins and inhibit their activity. Hydrogen peroxide generation from dopamine is toxic to immunocytes (31, 37) possibly through the generation of superoxide and hydroxyl radicals which can damage lipids, proteins or DNA, culminating in cell cycle arrest or death.

could reflect in large part the generally accepted 'toxicity' displayed by the catecholamine against a variety of cells, both immune and non-immune. An overview of possible mechanisms that lead to this outcome is presented pictorially in Fig. 2. It needs to be determined which (combinations) of these are operative in specific immune cell responses to dopamine and related compounds.

Closing remarks

The cumulative data for immune cells expressing multiple molecular components that equip them to respond to both serotonin and dopamine are overwhelming. The precise roles of the receptors and transporters for these biogenic monoamines within the immune system are at present, however, less clear. Nonetheless, their eventual disclosure should provide fresh insights and offer new paradigms to the interconnections operating within the neuro-immune axis. Excitingly, this in turn will indicate novel therapeutic targets on immune cells for which pharmacologically well-characterized drugs are already available, a concept recently reviewed by two of us in some detail.¹ Finally, the constituent cells of the circulating immune system provide a readily accessible source, and resource, of material that can potentially be exploited as surrogates to probe for markers of CNS-related disturbances. The examples of *ser* and *dat* polymorphisms have already been cited, the latter in relation to attention deficit disorder for example, the former in a wide variety of psychiatric disturbances including obsessive-compulsive disorder and major depression. Recently, the dopamine D₃ receptor has begun to attract special interest with respect to the 'peripheral marker hypothesis' with mRNA levels reported as being disturbed in individuals with the personality trait of 'persistence', in cigarette smokers, and those suffering from schizophrenia;²² migraine sufferers show increased D₅ receptor expression.²³ A full taxonomy of the precise complement of serotonergic and dopaminergic components expressed by distinct immune cell subsets, together with the details of their regulation, will greatly facilitate and accelerate both the therapeutic and diagnostic promise being indicated by the intriguing, but limited, studies described so far.

Acknowledgement

We wish to thank the Leukaemia Research Fund for supporting our research in this field.

References

- Gordon J, Barnes NM. Lymphocytes transport serotonin and dopamine: agony or ecstasy? *Trends Immunol* 2003; 24:438–43.
- Yang G-B, Lackner AA. Proximity between 5-HT secreting enteroendocrine cells and lymphocytes in the gut mucosa of rhesus macaques (*Macaca mulatta*) is suggestive of a role for enterochromaffin cell 5-HT in mucosal immunity. *J Neuroimmunol* 2004; 146:46–9.
- Felten D, Felten S, Bellinger D, Lorton D. Noradrenergic and peptidergic innervation of secondary lymphoid organs: role in experimental rheumatoid arthritis. *Eur J Clin Invest* 1992; 22:37–41.
- Beresford L, Orange O, Bell EB, Miyan JA. Nerve fibres are required to evoke a contact sensitivity response in mice. *Immunology* 2004; 111:118–25.
- Anthony IC, Crawford DH, Bell JE. B lymphocytes in the normal brain: contrasts with HIV-associated lymphoid infiltrates and lymphomas. *Brain* 2003; 126:1058–67.
- Serafeim A, Gordon J. The immune system gets nervous. *Curr Opin Pharmacol* 2001; 1:398–403.
- Abdoun M, Albert PR, Drobetsky E, Filep JG, Kouassi E. 5-HT_{1A}-mediated promotion of mitogen-activated T and B cell survival and proliferation is associated with increased translocation of NF- κ B to the nucleus. *Brain Behav Immun* 2004; 18:24–34.
- Cloez-Tayarani I, Kayyali US, Fanburg BL, Cavaillon J-M. 5-HT activates ERK MAP kinase in cultured-human peripheral blood mononuclear cells via 5-HT_{1A} receptors. *Life Sci* 2004; 76:429–43.
- Freire-Garabal M, Nunez MJ, Balboa J, et al. Serotonin upregulates the activity of phagocytosis through 5-HT_{1A} receptors. *Br J Pharmacol* 2003; 139:457–63.
- Idzko M, Panther E, Stratz C, et al. The serotonergic receptors of human dendritic cells: identification and coupling to cytokine release. *J Immunol* 2004; 172:6011–19.
- Serafeim A, Grafton G, Chamba A, Gregory CD, Blakely RD, Bowery NG, Barnes NM, Gordon J. 5-Hydroxytryptamine drives apoptosis in biopsy-like Burkitt lymphoma cells: reversal by selective serotonin reuptake inhibitors. *Blood* 2002; 99:2545–53.
- Serafeim A, Holder MJ, Grafton G, et al. Selective serotonin reuptake inhibitors directly signal for apoptosis in biopsy-like Burkitt lymphoma cells. *Blood* 2003; 101:3212–19.
- Meredith EJ, Holder MJ, Chamba A, et al. The serotonin transporter (SLC6A4) is present in B-cell clones of diverse malignant origin: probing a potential anti-tumor target for psychotropics. *FASEB J* in press.
- Connor TJ. Methylenedioxymethamphetamine (MDMA, 'Ecstasy'): a stressor on the immune system. *Immunology* 2004; 111:357–67.
- Walther DJ, Peter JU, Winter S, et al. Serotonylation of small GTPases is a signal transduction pathway that triggers platelet alpha-granule release. *Cell* 2003; 115:851–62.
- Rudd ML, Nicolas AN, Brown BL, Fischer-Stenger K, Stewart JK. Peritoneal macrophages express the serotonin transporter. *J Neuroimmunol* 2005; 159:113–18.
- Bencsics A, Sershen H, Baranyi M, Hashim A, Lajtha A, Vizi ES. Dopamine, as well as norepinephrine, is a link between noradrenergic nerve terminals and splenocytes. *Brain Res* 1997; 761:236–43.
- McKenna F, McLaughlin PJ, Lewis BJ, Sibbring GC, Cummerson JA, Bowen-Jones D, Moots RJ. Dopamine receptor expression on human T- and B-lymphocytes, monocytes, neutrophils, eosinophils and NK cells: a flow cytometric study. *J Neuroimmunol* 2002; 132:34–40.
- Kipnis J, Cardon M, Avidan H, Lewitus GM, Mordechai S, Rolls A, Shani Y, Schwartz M. Dopamine, through the extracellular

- signal-regulated kinase pathway, downregulates CD4+CD25+ regulatory T-cell activity: implications for neurodegeneration. *J Neurosci* 2004; 24:6133–43.
- 20 Ilani T, Strous R, Fuchs S. Dopaminergic regulation of immune cells via D3 dopamine receptor: a pathway mediated by activated T cells. *FASEB J* 2004; 18:1600–2.
 - 21 Mill J, Asherson P, Browes C, D'Souza U, Craig I. Expression of the dopamine transporter gene is regulated by the 3' UTR VNTR. Evidence from brain and lymphocytes using quantitative RT-PCR. *Am J Med Genet* 2002; 114:975–9.
 - 22 Ilani T, Ben-Shachar D, Strous RD, Mazor M, Sheinkman A, Kotler M, Fuchs S. A peripheral marker for schizophrenia: increased levels of D3 dopamine receptor mRNA in blood lymphocytes. *Proc Natl Acad Sci USA* 2001; 98:625–8.
 - 23 Barbanti P, Bronzetti E, Ricci A, Cerbo R, Fabbrini G, Buzzi M, Amenta F, Lenzi G. Increased density of dopamine D5 receptor in peripheral blood lymphocytes of migraineurs: a marker for migraine? *Neuroscience Lett* 1996; 207:73–6.
 - 24 Saha B, Mondal AC, Basu S, Dasgupta PS. Circulating dopamine level, in lung carcinoma patients inhibits proliferation and cytotoxicity of CD4+ and CD8+ T cells by D1 dopamine receptors. *Int Immunopharmacol* 2001; 1:1363–74.
 - 25 Bergquist J, Josefsson E, Tarkowski A, Ekman R, Ewing A. Measurements of catecholamine-mediated apoptosis of immunocompetent cells by capillary electrophoresis. *Electrophoresis* 1997; 18:1760–6.
 - 26 Ghosh MC, Mondal AC, Basu S, Banerjee S, Majumder J, Bhattacharya D, Dasgupta P. Dopamine inhibits cytokine release and expression of tyrosine kinases, Lck and Fyn in activated T cells. *Int Immunopharmacol* 2003; 3:1019–26.
 - 27 Liu Y, Wolfe S. Haloperidol and spiperone potentiate murine splenic B cell proliferation. *Immunopharmacology* 1996; 34:147–59.
 - 28 Josefsson E, Bergquist J, Ekman R, Tarkowski A. Catecholamines are synthesized by mouse lymphocytes and regulate function of these cells by induction of apoptosis. *Immunology* 1996; 88:140–6.
 - 29 Carr L, Tucker A, Fernandez-Botran R. In vivo administration of L-dopa or dopamine decreases the number of splenic IFN-gamma-producing cells. *J Neuroimmunol* 2003; 137:87–93.
 - 30 Cioca DP, Watanabe N, Isobe M. Apoptosis of peripheral blood lymphocytes is induced by catecholamines. *Jap Heart J* 2000; 41:385–98.
 - 31 Del Rio MJ, Velez-Pardo C. Monoamine neurotoxins-induced apoptosis in lymphocytes by a common oxidative stress mechanism: involvement of hydrogen peroxide (H₂O₂), caspase-3, and nuclear factor kappa-B (NF- κ B), p53, c-Jun transcription factors. *Biochem Pharmacol* 2002; 63:677–88.
 - 32 Brown SW, Meyers RT, Brennan KM, et al. Catecholamines in a macrophage cell line. *J Neuroimmunol* 2003; 135:47–55.
 - 33 Offen D, Ziv I, Gorodin S, Barzilai A, Malik Z, Melamed E. Dopamine-induced programmed cell death in mouse thymocytes. *Biochim Biophys Acta* 1995; 1268:171–7.
 - 34 Slominski A, Goodman-Snitkoff G. Dopa inhibits induced proliferative activity of murine and human lymphocytes. *Anticancer Res* 1992; 12:753–6.
 - 35 Bergquist J, Tarkowski A, Ekman R, Ewing A. Discovery of endogenous catecholamines in lymphocytes and evidence for catecholamine regulation of lymphocyte function via an autocrine loop. *Proc Natl Acad Sci United States America* 1994; 91:12912–16.
 - 36 Cook-Mills J, Cohen R, Perlman R, Chambers D. Inhibition of lymphocyte activation by catecholamines: evidence for a non-classical mechanism of catecholamine action. *Immunology* 1995; 85:544–9.
 - 37 Elkashef AM, Al-Barazi H, Venable D, Baker I, Hill J, Apud J, Wyatt RJ. Dopamine effect on the mitochondrial potential in B lymphocytes of schizophrenic patients and normal controls. *Prog Neuro-Psychopharmacol Biol Psychiatr* 2002; 26:145–8.
 - 38 Fierová A, Starec M, Kuldová M, Ková H, Páv M, Vannucci L, Pospíšil M. Effects of D2-dopamine and -adrenoceptor antagonists in stress induced changes on immune responsiveness of mice. *J Neuroimmunol* 2002; 130:55–65.
 - 39 Levite M, Chowers Y, Ganor Y, Besser M, HersHKovits R, Cahalon L. Dopamine interacts directly with its D3 and D2 receptors on normal human T cells, and activates beta1 integrin function. *European J Immunol* 2001; 31:3504–12.
 - 40 Tsao C, Lin Y, Cheng J. Effect of dopamine on immune cell proliferation in mice. *Life Sci* 1997; 61:361–71.
 - 41 Deleplanque B, Vitiello S, Le Moal M, Neveu P. Modulation of immune reactivity by unilateral striatal and mesolimbic dopaminergic lesions. *Neurosci Lett* 1994; 166:216–20.
 - 42 Idova G, Cheido M, Zhukova E, Devoino L. Stimulation of the immune response during activation of the dopaminergic system in mice with opposite types of behavior. *Neurosci Behav Physiol* 2004; 34:417–21.
 - 43 Lee S, So C, Rashid A, Varghese G, Cheng R, Lança A, O'Dowd B, George SR. Dopamine D1 and D2 receptor co-activation generates a novel phospholipase C-mediated calcium signal. *J Biol Chem* 2004; 279:35671–8.
 - 44 Chen J, Rusnak M, Luedtke R, Sidhu A. D1 dopamine receptor mediates dopamine-induced cytotoxicity via the ERK signal cascade. *J Biol Chem* 2004; 279:39317–30.
 - 45 Bergquist. Catecholaminergic suppression of immunocompetent cells. *Immunol Today* 1998; 19:562–7.
 - 46 Buu NT. Uptake of 1-methyl-4-phenylpyridinium and dopamine in the mouse brain cell nuclei. *J Neurochem* 1993; 61:1557–60.
 - 47 Pifl C, Kattinger A, Reither H, Hornykiewicz O. Cellular effects of dopamine – beyond oxidative mechanisms. *Parkinsonism Related Disorders* 2002; 8:433–7.
 - 48 Graham D, Tiffany S, Bell WJ, Gutknecht W. Autoxidation versus covalent binding of quinones as the mechanism of toxicity of dopamine, 6-hydroxydopamine, and related compounds toward C1300 neuroblastoma cells in vitro. *Mol Pharmacol* 1978; 14:644–53.